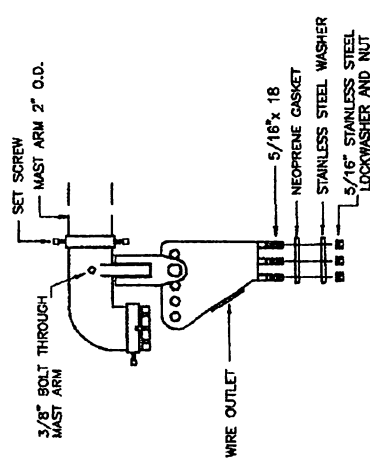
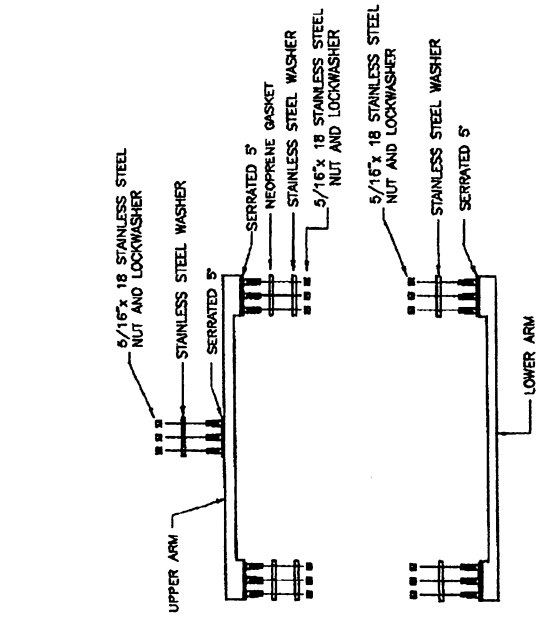


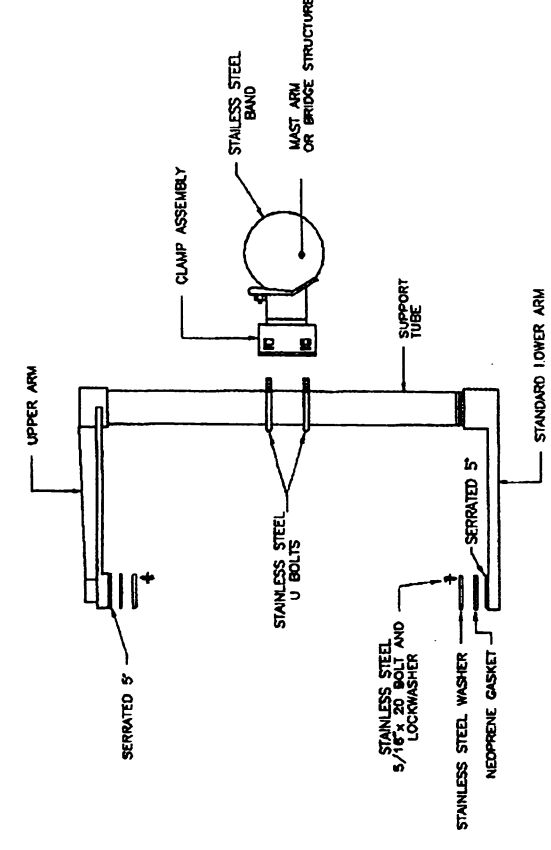
MAST ARM SLIP FITTER
(5 SECTIONS FACE)



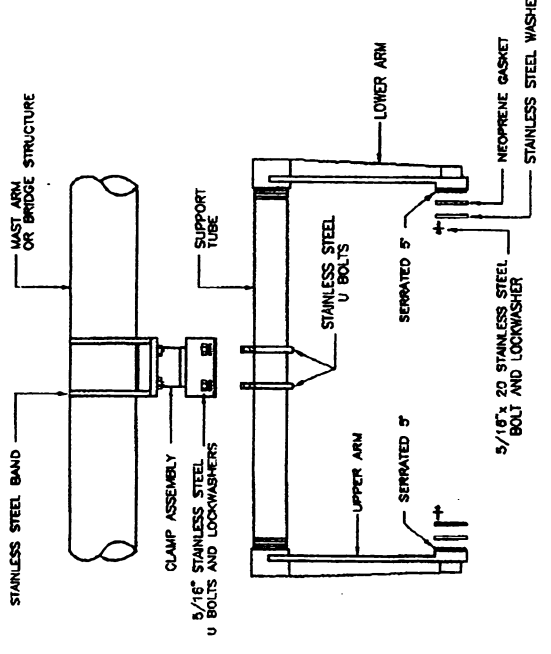
MAST ARM SLIP FITTER
(3 & 5 SECTION FACE)



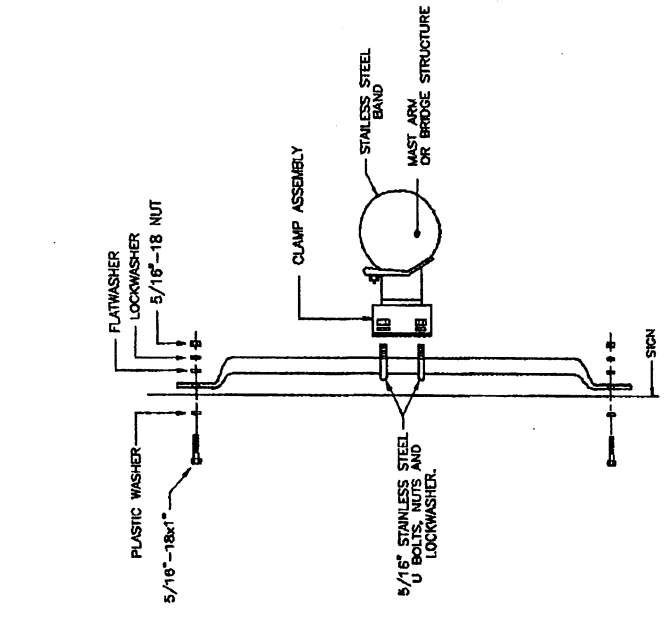
UPPER AND LOWER ARM
FOR CLUSTER ASSEMBLY



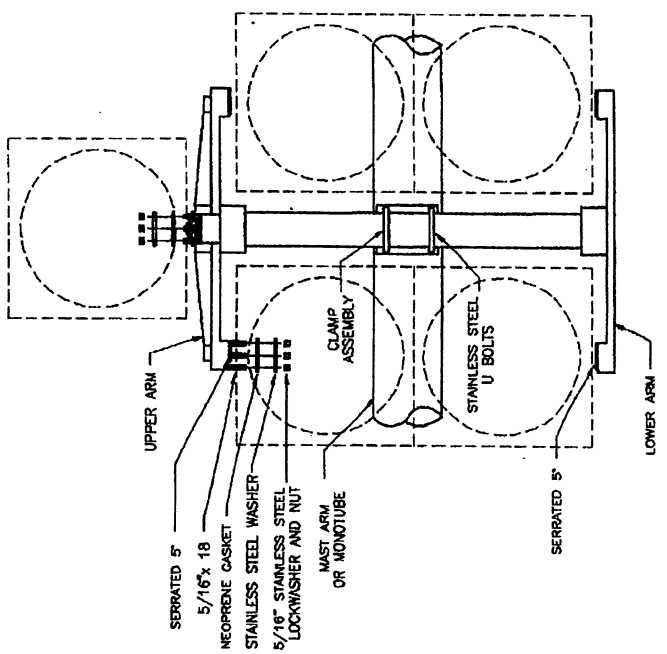
3 SECTIONS SIGNAL MOUNTING ASSEMBLY



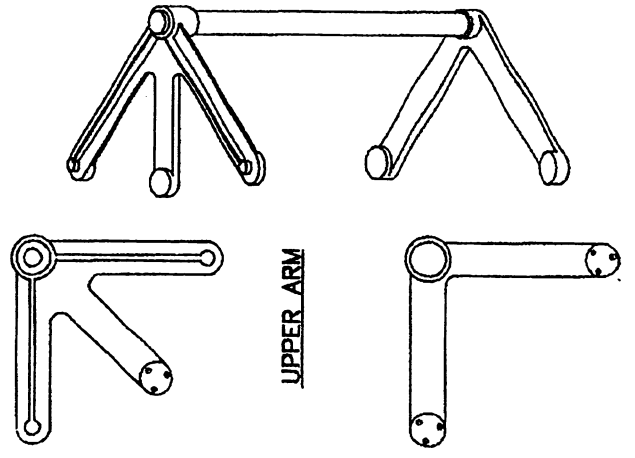
HORIZONTAL SIGNAL MOUNTING ASSEMBLY



SIGN MOUNTING ASSEMBLY



5 SECTIONS (CLUSTER) MOUNTING ASSEMBLY



UPPER ARM

LOWER ARM

SPECIFICATIONS

- 1- CLAMP ASSEMBLY AND SLIP FITTERS SHALL BE FABRICATED FROM CAST ALUMINUM 356-16.
- 2- UPPER ARMS, LOWER ARMS SHALL BE FABRICATED FROM ALUMINUM ALLOY 319.
- 3- SUPPORT TUBE SHALL BE FABRICATED FROM ALUMINUM 6063-T6.
- 4- WIRE OUTLETS SHALL BE FABRICATED FROM ALUMINUM ALLOY 713.
- 5- BOLTS, NUTS AND WASHERS SHALL BE OF STAINLESS STEEL 410 OR ANSI TYPE 300 SERIES ACCORDING TO ANSI B1.1.
- 6- CLAMP SCREW SHALL BE 410 STAINLESS STEEL.
- 7- STAINLESS STEEL BANDS SHALL BE 06 TYPE 201 STAINLESS STEEL.
- 8- NEOPRENE GASKETS SHALL BE OF 60-70 DUROMETER NEOPRENE, 1/16" THICK.

EFFECTIVE DATE: OCTOBER 1997

COMMONWEALTH OF PUERTO RICO DEPARTMENT OF TRANSPORTATION AND PUBLIC WORKS HIGHWAY AND TRANSPORTATION AUTHORITY	
TRAFFIC SIGNAL	RECOMMENDED BY: <i>[Signature]</i>
MAST ARM & BRIDGE MOUNTING	ASST. DIR. DIR. FOR TRAFFIC DATE: 10-1-97
ASSEMBLY DETAILS	APPROVED BY: <i>[Signature]</i>
	EXECUTIVE DIRECTOR DATE: 10-1-97
	DATE: 10-1-97
	DATE: 10-1-97
DATE	REVISION
	BY
	TRSI
	STD. DWG. 27 OF 40