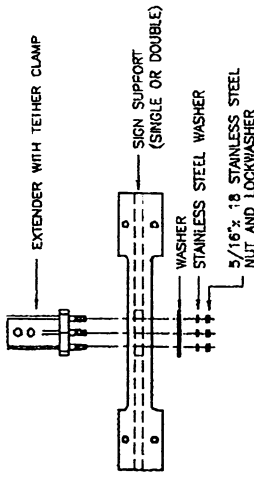
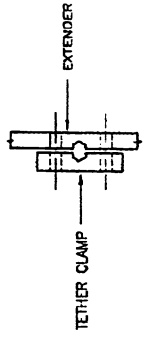


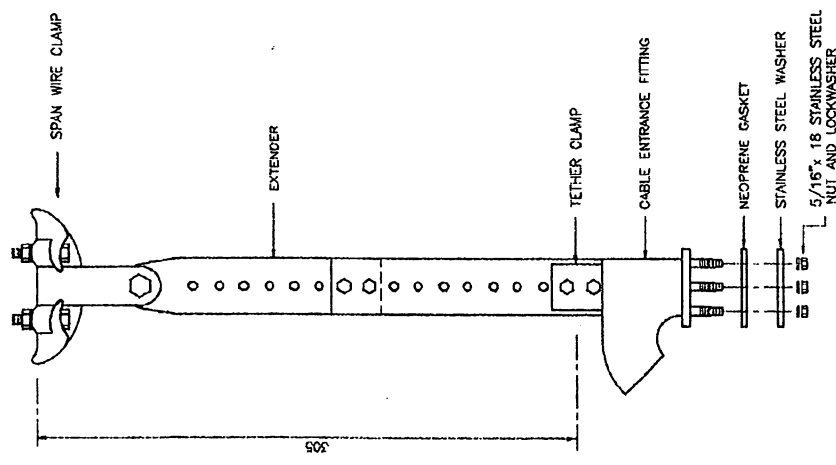
HORIZONTAL MOUNTING FOR SPAN WIRE



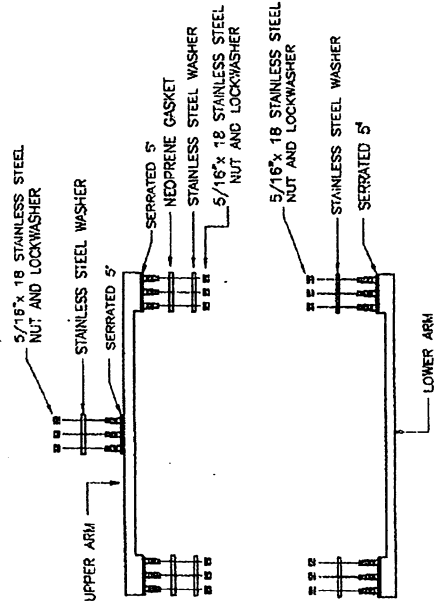
SIGN MOUNTING ASSEMBLY



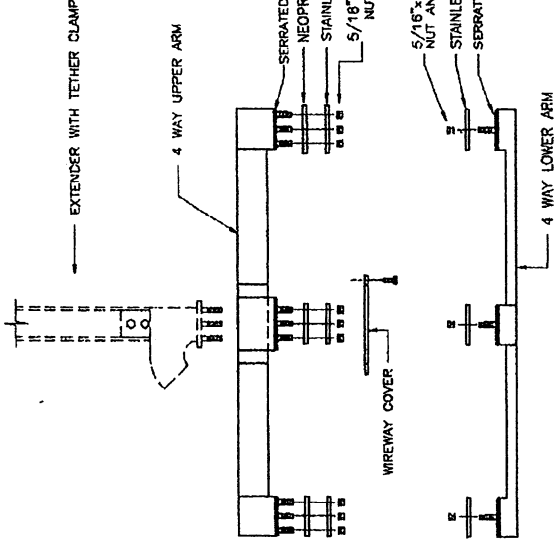
TETHER DETAIL



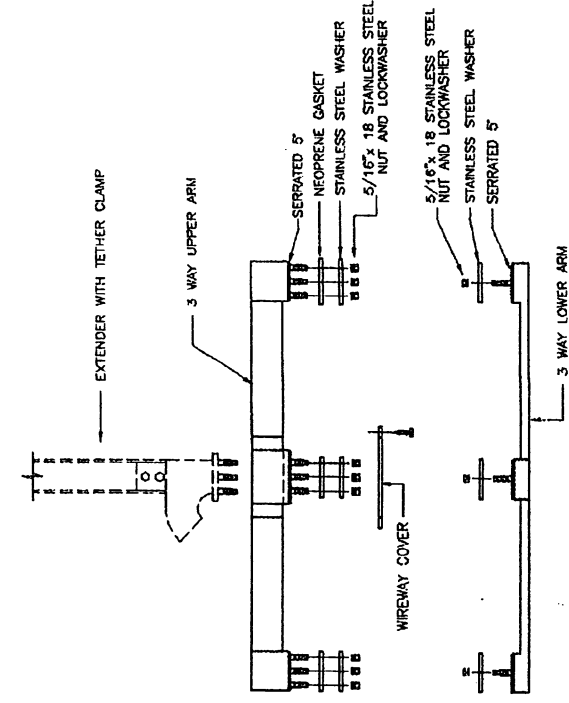
**SPAN WIRE ASSEMBLY
(1 FACE ASSEMBLY)**



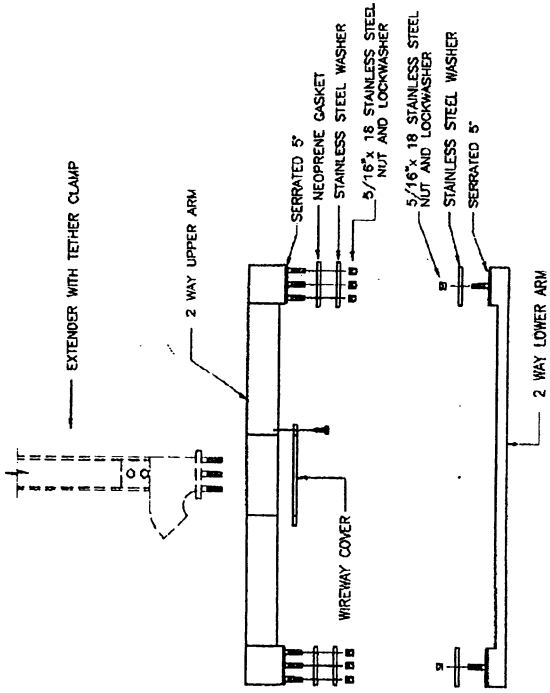
**UPPER AND LOWER ARM
FOR CLUSTER ASSEMBLY**



4--FACES ARM ASSEMBLY



3--FACES ARM ASSEMBLY



2--FACES ARM ASSEMBLY

SPECIFICATIONS:

- 1- LOWER ARMS SHALL BE FABRICATED FROM ASTM A-157 STEEL WITH ASTM G-60 GALVANIZED FINISH.
- 2- WIRE OUTLET, EXTENDER, UPPER ARMS AND SIGN SUPPORT STRUCTURE SHALL BE FABRICATED FROM CAST ALUMINUM 319.
- 3- BOLTS, NUTS AND WASHERS SHALL BE OF STAINLESS STEEL 410 OR ANSI TYPE 300 SERIES ACCORDING ANSI B1.1.
- 4- TETHER CLAMP SHALL BE OF CAST ALUMINUM ALLOY.
- 5- WIREWAY COVER SHALL BE OF GALVANIZED STEEL
- 6- NEOPRENE GASKET SHALL BE OF 60-70 DUROMETER NEOPRENE.
- 7- SUPPORT TUBE SHALL BE OF EXTRUDED FROM 6063-T6 ALUMINUM ALLOY.

EFFECTIVE DATE: OCTOBER 1997

COMMONWEALTH OF PUERTO RICO DEPARTMENT OF TRANSPORTATION AND PUBLIC WORKS HIGHWAY AND TRANSPORTATION AUTHORITY	
TRAFFIC SIGNAL	RECOMMENDED BY: <i>[Signature]</i>
SPAN WIRE MOUNTING	ASST. EX. DIR. FOR TRAFFIC DATE: 10/27/97
ASSEMBLY DETAILS	APPROVED BY: <i>[Signature]</i> EXECUTIVE DIRECTOR DATE: 3-MAY-97
DATE	BY
REVISION	BY
STD. TRSI	DATE
DWG. 32 OF 40	