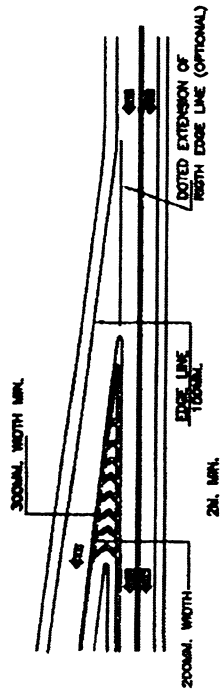
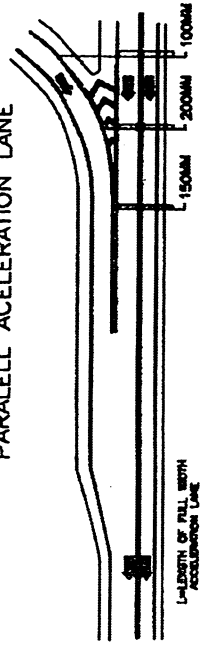


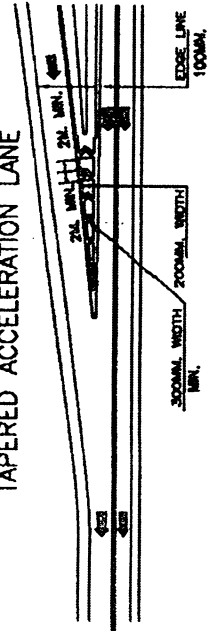
TAPERED DECELERATION LANE



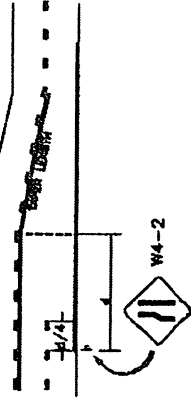
PARALLELL ACCELERATION LANE



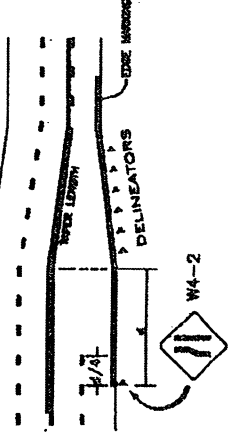
TAPERED ACCELERATION LANE



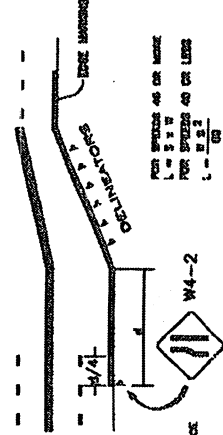
FROM 3 LANES TO 2 LANES



FROM 4 LANES TO 3 LANES

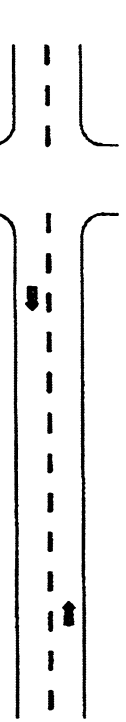


FROM 4 LANES TO 2 LANES



1 - LENGTH IN FEET
2 - MIN. POSSIBLE SPEED
3 - OFFSET IN FEET
4 - ADVANCE WARNING DISTANCE

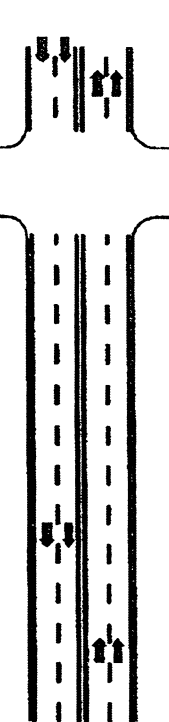
TYPICAL TWO-LANE, TWO-WAY MARKING WITH PASSING PERMITTED



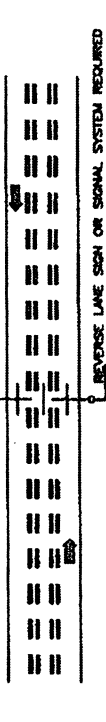
TYPICAL TWO-LANE, TWO-WAY MARKING WITH PASSING PROHIBITED ZONES



TYPICAL MULTI-LANE, TWO-WAY MARKING



TYPICAL TWO-WAY MARKING WITH A REVERSIBLE CENTER LINE



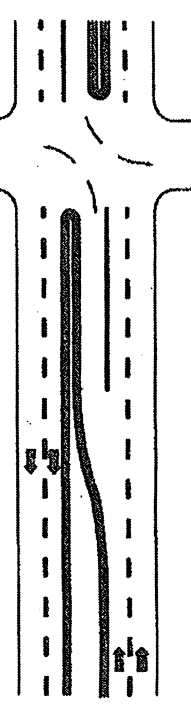
TYPICAL TWO-WAY MARKING WHERE MOTORISTS IN A SINGLE LANE ARE PERMITTED TO PASS



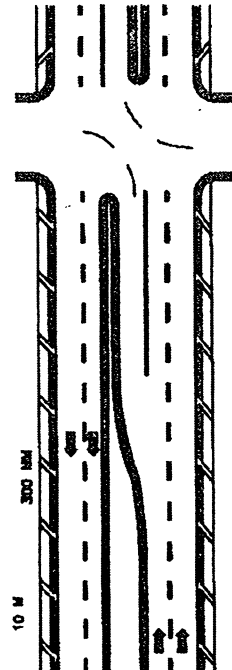
TYPICAL TWO-WAY MARKING WHERE MOTORISTS IN A SINGLE LANE ARE NOT PERMITTED TO PASS



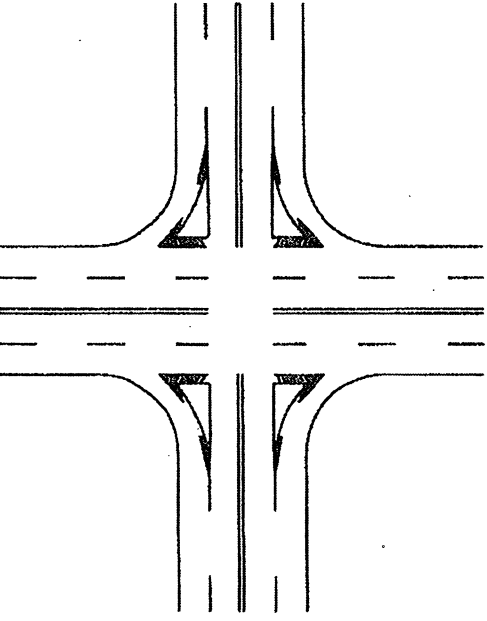
TYPICAL DIVIDED HIGHWAY MARKING WITH RAISED MEDIAN AND OPTIONAL MEDIAN EDGE LINE (YELLOW)



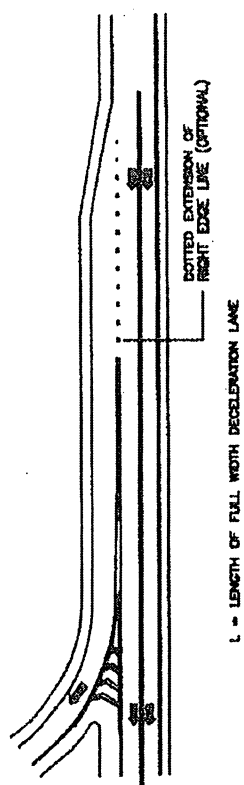
TYPICAL DIVIDED HIGHWAY MARKING WITH FLUSH MEDIAN AND OPTIONAL TRANSVERSE SHOULDER MARKING



TYPICAL CURB ISLAND MARKING



PARALLELL DECELERATION LANE



EFFECTIVE DATE: OCTOBER 1997

COMMONWEALTH OF PUERTO RICO
DEPARTMENT OF TRANSPORTATION
AND PUBLIC WORKS
HIGHWAY AND TRANSPORTATION AUTHORITY

RECOMMENDED BY: [Signature]
EXC. DIR. ASS. FOR TRAFFIC DATE: 11-20-92
APPROVED BY: [Signature]
EXECUTIVE DIRECTOR DATE: 12-5-92
APPROVED BY: [Signature]
DIR. ADJ. ENGR. DIVISION DATE: 1-15-93

TRAFFIC SIGN
PAVEMENT MARKING
DETAILS

DATE	REVISION	BY	STD.	TRSN
			DWG.	17 OF 18