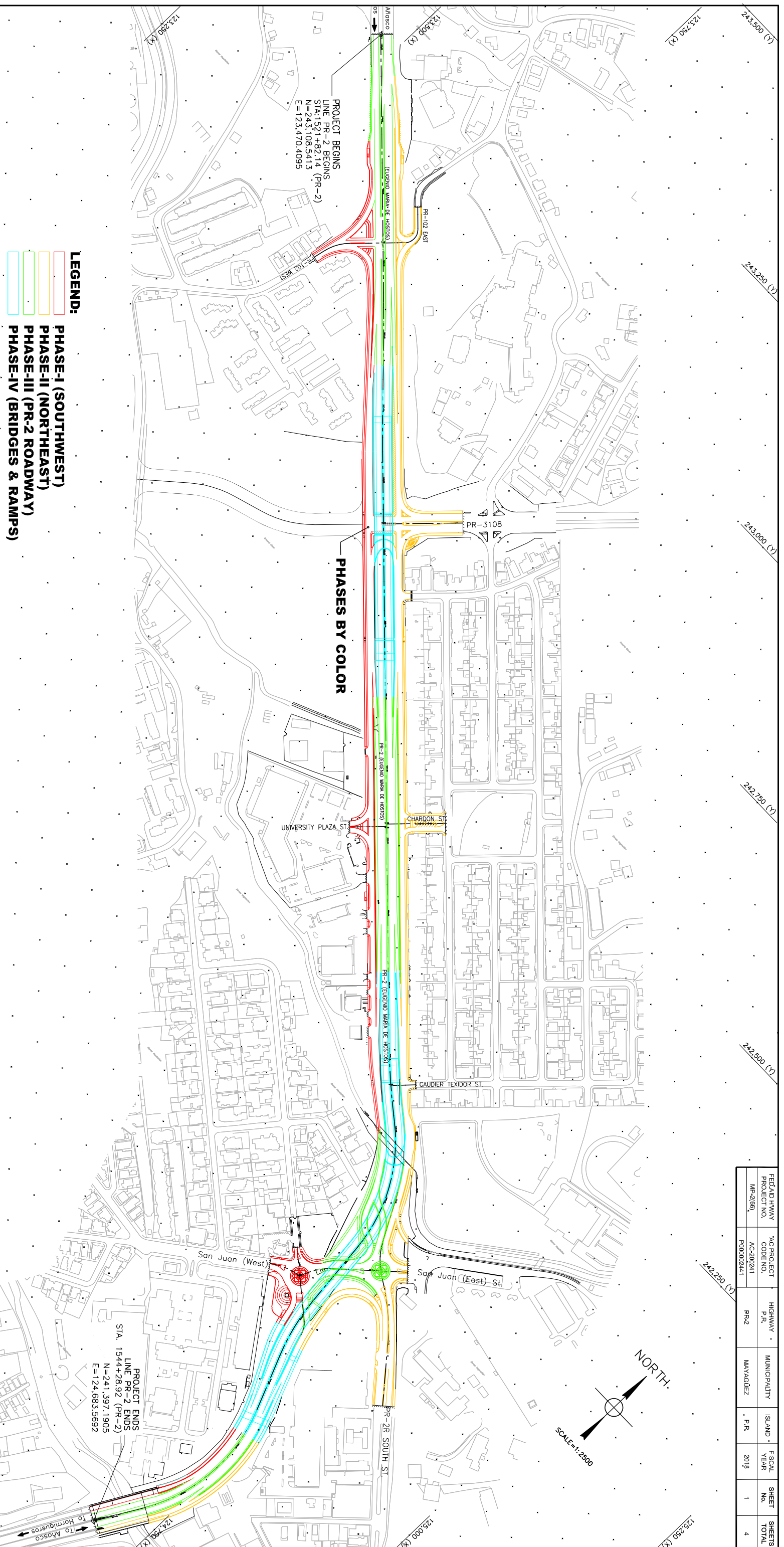
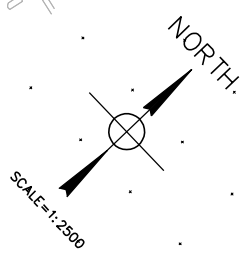


REF AD HWY PROJECT NO. MP-2(66)	%C PROJECT CODE NO. AC-200241	HIGHWAY F/R PR-2	MUNICIPALITY MAYAGÜEZ	ISLAND P.R.	FISCAL YEAR 2018	SHEET NO. 1	SHEETS TOTAL 4
---------------------------------------	-------------------------------------	------------------------	--------------------------	----------------	------------------------	-------------------	----------------------



- LEGEND:**
- PHASE-I (SOUTHWEST)
 - PHASE-II (NORTHEAST)
 - PHASE-III (PR-2 ROADWAY)
 - PHASE-IV (BRIDGES & RAMPS)

PROJECT BEGINS
LINE PR-2 BEGINS
STA: 152+82.14 (PR-2)
N=243,108.3413
E=123,470.4095

PHASES BY COLOR

PROJECT ENDS
LINE PR-2 ENDS
STA. 1544+28.92 (PR-2)
N=241,397.1905
E=124,683.5692

PUERTO RICO HIGHWAY AND TRANSPORTATION AUTHORITY

JOSE A. BATLLE & ASOCIADOS, C.S.P.

INTERSTATE ACCESS REQUEST, ANALYSIS AND PRELIMINARY DESIGN
OF IMPROVEMENTS TO INTERSECTION PR-2, 2R AND SAN JUAN ST.
(RUM ENTRANCE, LA VITA), PR-2 KM 153.90, MAYAGÜEZ

AC-200241 P000002441 MP-2(66)

DATE	REVISION

GRAPHIC SCALE
(IN METERS)

1:2500

PHASES GENERAL LAYOUT

PH
0.5

123,000 (X) 242,500 (Y)

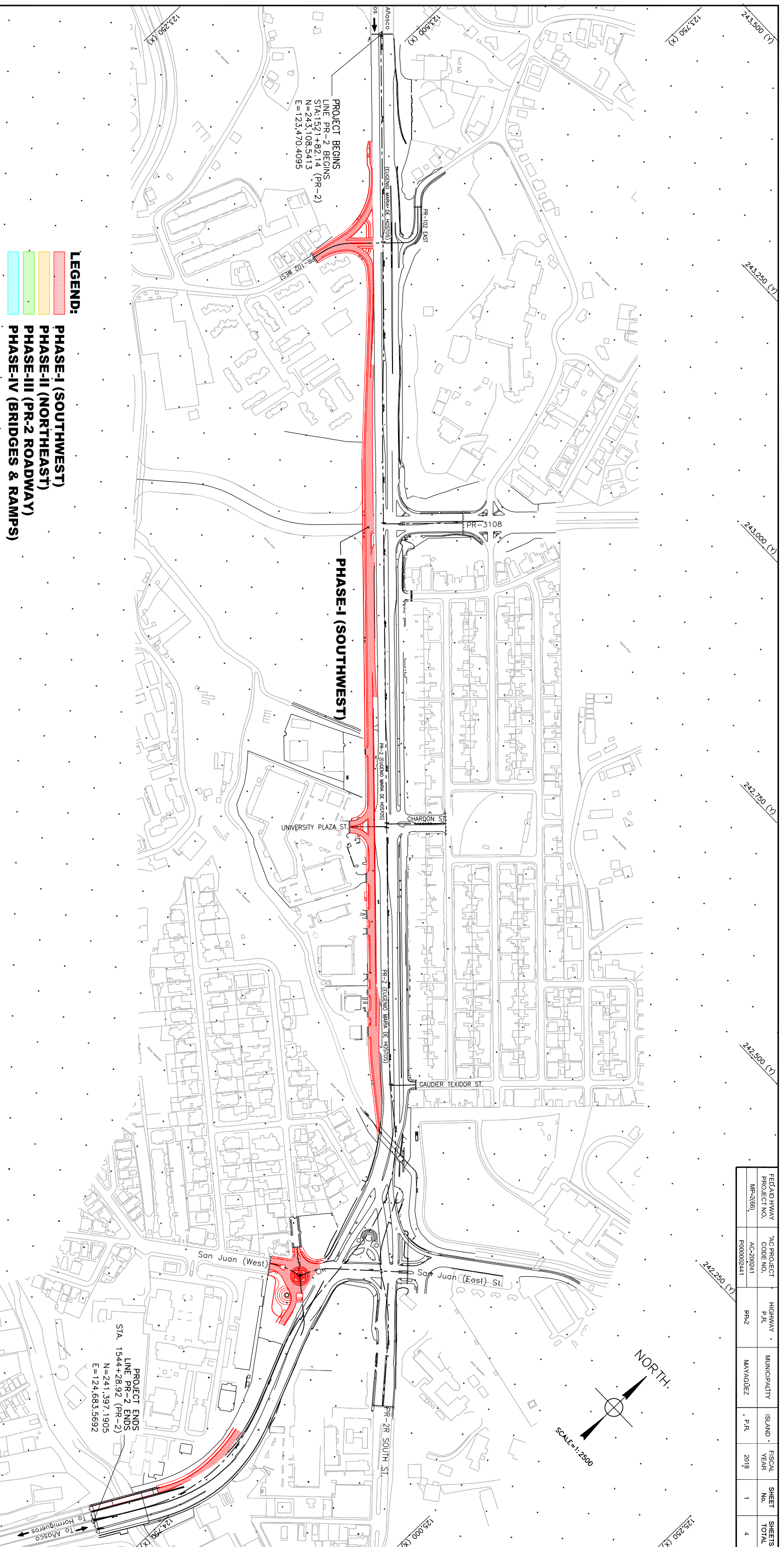
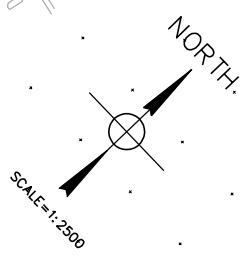
123,250 (X) 242,750 (Y)

123,500 (X) 243,000 (Y)

123,750 (X) 243,250 (Y)

124,000 (X) 243,500 (Y)

REF AD HWY PROJECT NO. MP-2(66)	%C PROJECT CODE NO. AC-200241	PROJECT NO. P000002441	HIGHWAY F/R PR-2	MUNICIPALITY MAYAGÜEZ	ISLAND P.R.	FISCAL YEAR 2018	SHEET NO. 1	SHEETS TOTAL 4
---------------------------------------	-------------------------------------	------------------------------	------------------------	--------------------------	----------------	------------------------	-------------------	----------------------



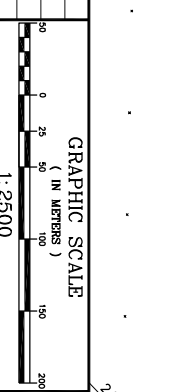
- LEGEND:**
- PHASE-I (SOUTHWEST)
 - PHASE-II (NORTHEAST)
 - PHASE-III (PR-2 ROADWAY)
 - PHASE-IV (BRIDGES & RAMPS)

PUERTO RICO HIGHWAY AND TRANSPORTATION AUTHORITY

JOSE A. BATLLE & ASOCIADOS, C.S.P.

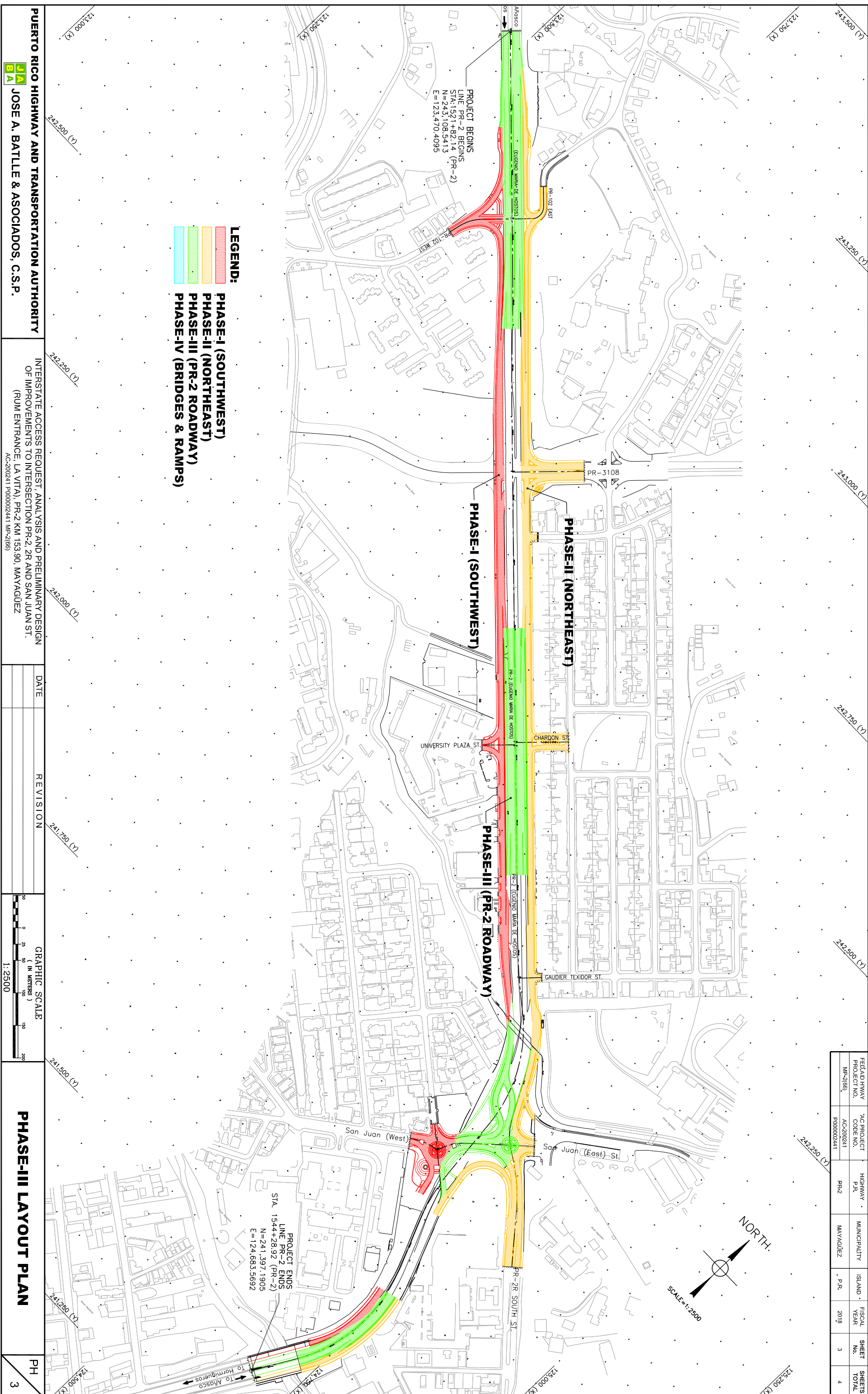
INTERSTATE ACCESS REQUEST, ANALYSIS AND PRELIMINARY DESIGN
OF IMPROVEMENTS TO INTERSECTION PR-2, 2R AND SAN JUAN ST.
(RUM ENTRANCE, LA VITA), PR-2 KM 153.90, MAYAGÜEZ
AC-200241 P000002441 MP-2(66)

DATE	REVISION



PHASE-I LAYOUT PLAN

REF AD HWY PROJECT NO.	AC PROJECT CODE NO.	HIGHWAY F/R	MUNICIPALITY	ISLAND	FISCAL YEAR	SHEET NO.	SHEETS TOTAL
MP-2(66)	AC-200241	PR-2	MAYAGÜEZ	P.R.	2018	3	4
	P000002441						



- LEGEND:**
- █ PHASE-I (SOUTHWEST)
 - █ PHASE-II (NORTHEAST)
 - █ PHASE-III (PR-2 ROADWAY)
 - █ PHASE-IV (BRIDGES & RAMPS)

PROJECT BEGINS
LINE PR-2 BEGINS
STA: 152+82.14 (PR-2)
N=243,108.3413
E=123,470.4095

PROJECT ENDS
LINE PR-2 ENDS
STA. 1544+28.92 (PR-2)
N=241,397.1905
E=124,683.5692

PUERTO RICO HIGHWAY AND TRANSPORTATION AUTHORITY

JOSE A. BATILLE & ASOCIADOS, C.S.P.

INTERSTATE ACCESS REQUEST, ANALYSIS AND PRELIMINARY DESIGN
OF IMPROVEMENTS TO INTERSECTION PR-2, 2R AND SAN JUAN ST.
(RUM ENTRANCE, LA VITA), PR-2 KM 153.90, MAYAGÜEZ
AC-200241 P000002441 MP-2(66)

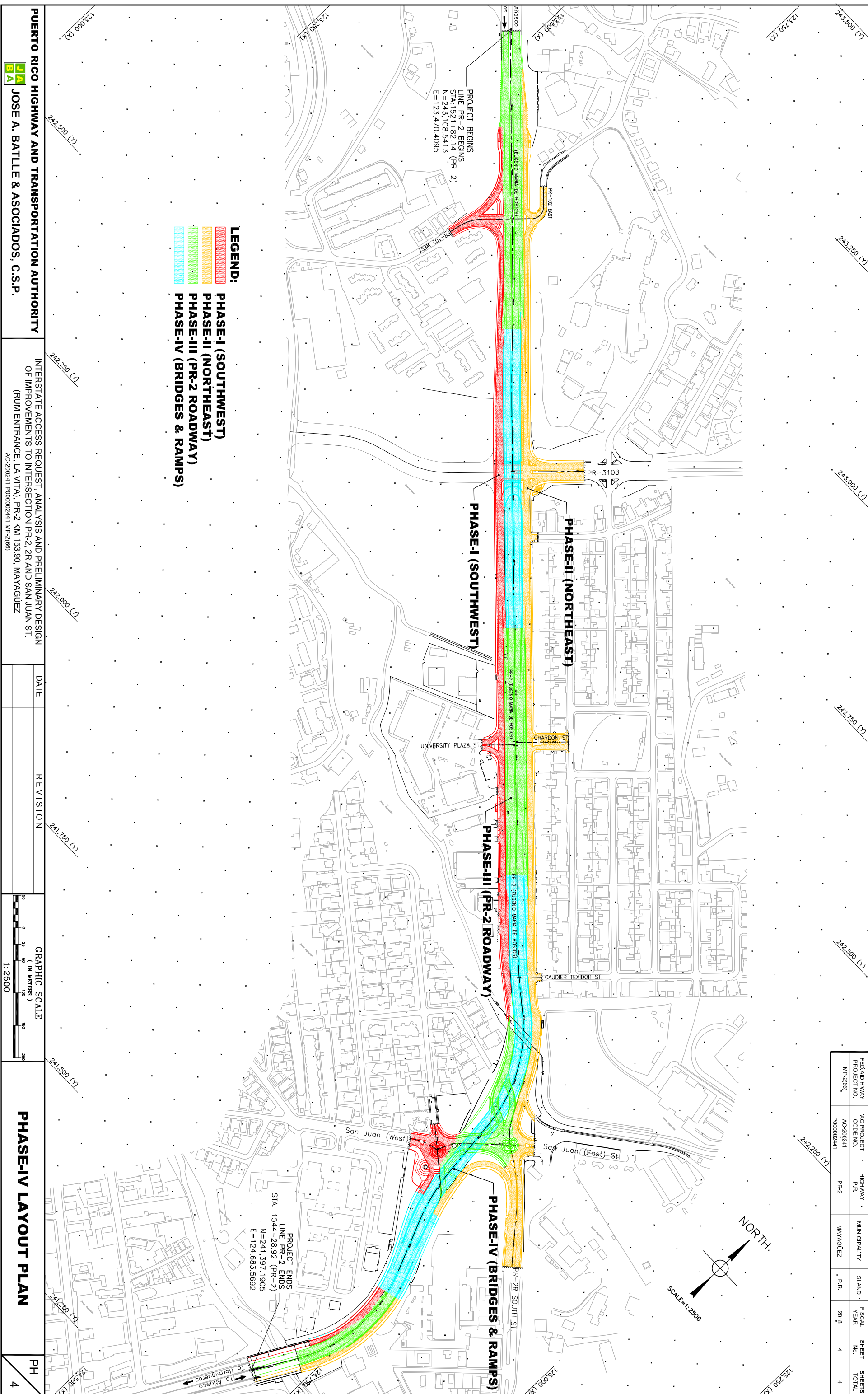
DATE	REVISION



PHASE-III LAYOUT PLAN

PH
3

REF AD HWY PROJECT NO. MP-2(66)	%C PROJECT CODE NO. AC-200241	MUNICIPALITY MAYAGÜEZ	HIGHWAY F/R PR-2	ISLAND P.R.	FISCAL YEAR 2018	SHEET NO. 4	SHEETS TOTAL 4
---------------------------------------	-------------------------------------	--------------------------	------------------------	----------------	------------------------	-------------------	----------------------

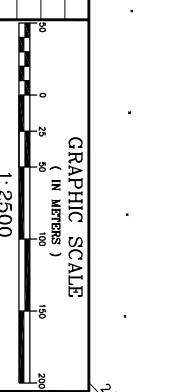


- LEGEND:**
- PHASE-I (SOUTHWEST)
 - PHASE-II (NORTHEAST)
 - PHASE-III (PR-2 ROADWAY)
 - PHASE-IV (BRIDGES & RAMPS)

PUERTO RICO HIGHWAY AND TRANSPORTATION AUTHORITY
JOSE A. BATLLE & ASOCIADOS, C.S.P.

INTERSTATE ACCESS REQUEST, ANALYSIS AND PRELIMINARY DESIGN
 OF IMPROVEMENTS TO INTERSECTION PR-2, 2R AND SAN JUAN ST.
 (RUM ENTRANCE, LA VITA), PR-2 KM 153.90, MAYAGÜEZ
 AC-200241 P000002441 MP-2(66)

DATE	REVISION



PHASE-IV LAYOUT PLAN