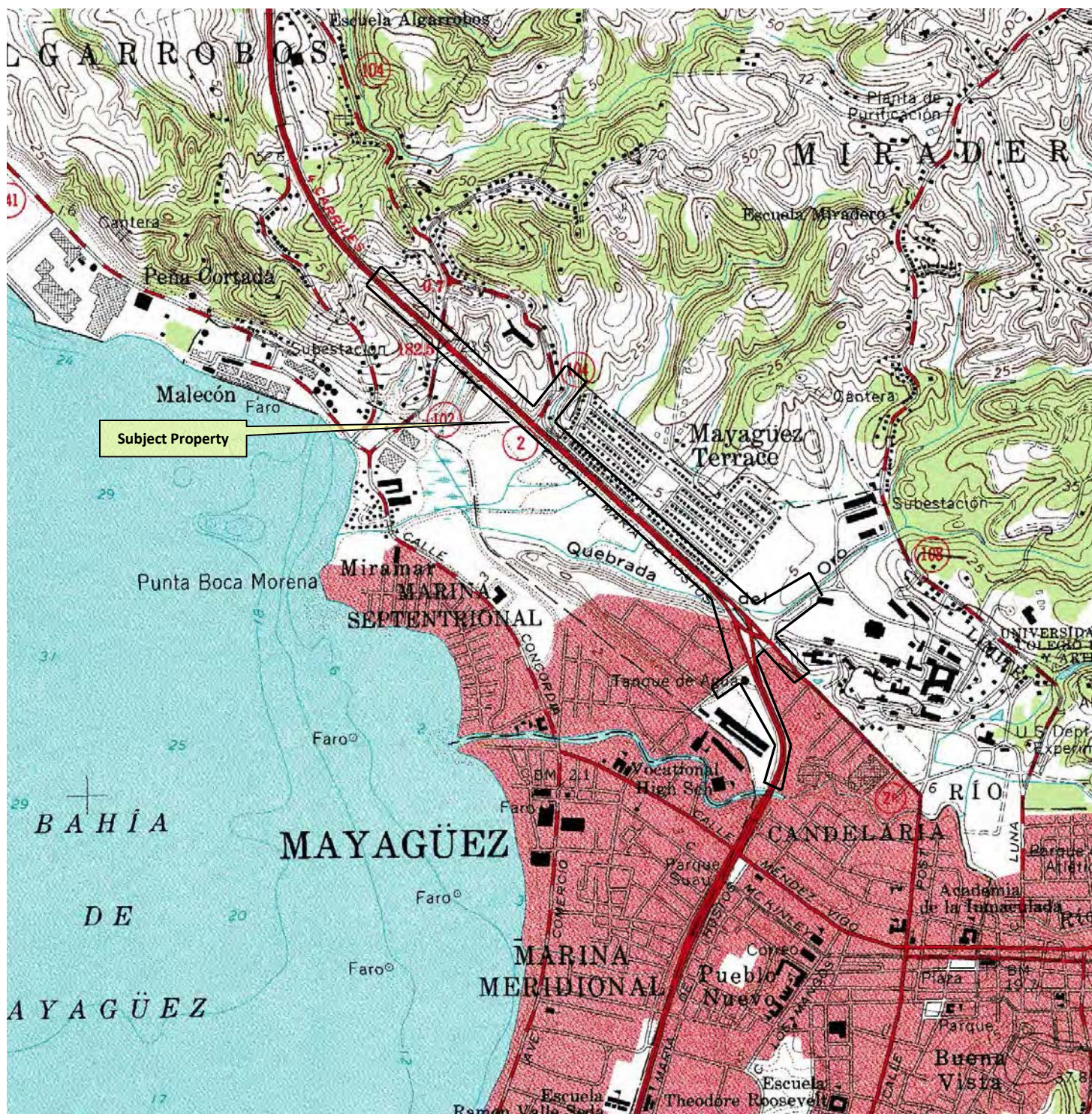


# APPENDICES

# **Appendix 1**

## **Figures**



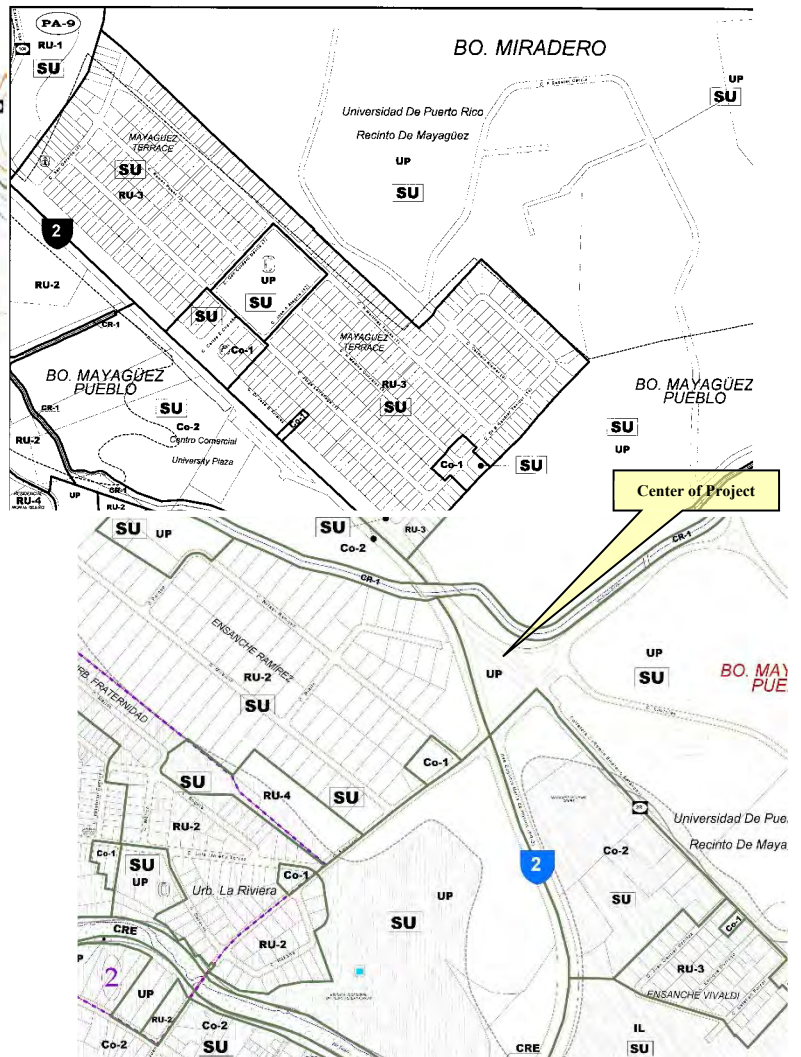
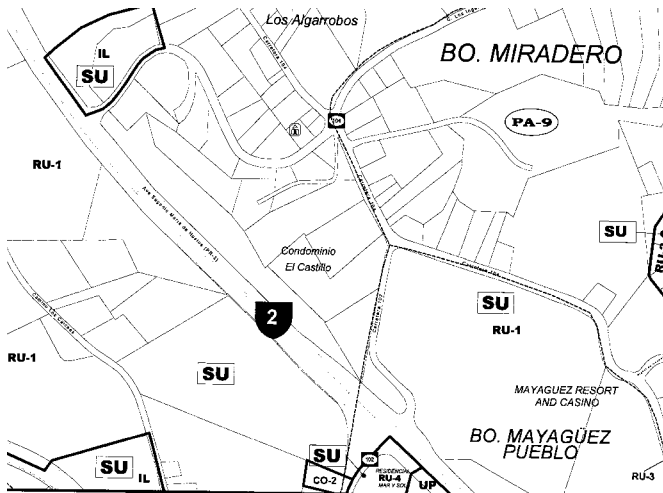
**Topographic Map**

**Reference:** USGS Mayaguez Quadrangle, 1964.

**FIGURE 1**



RAF Environmental Consultants



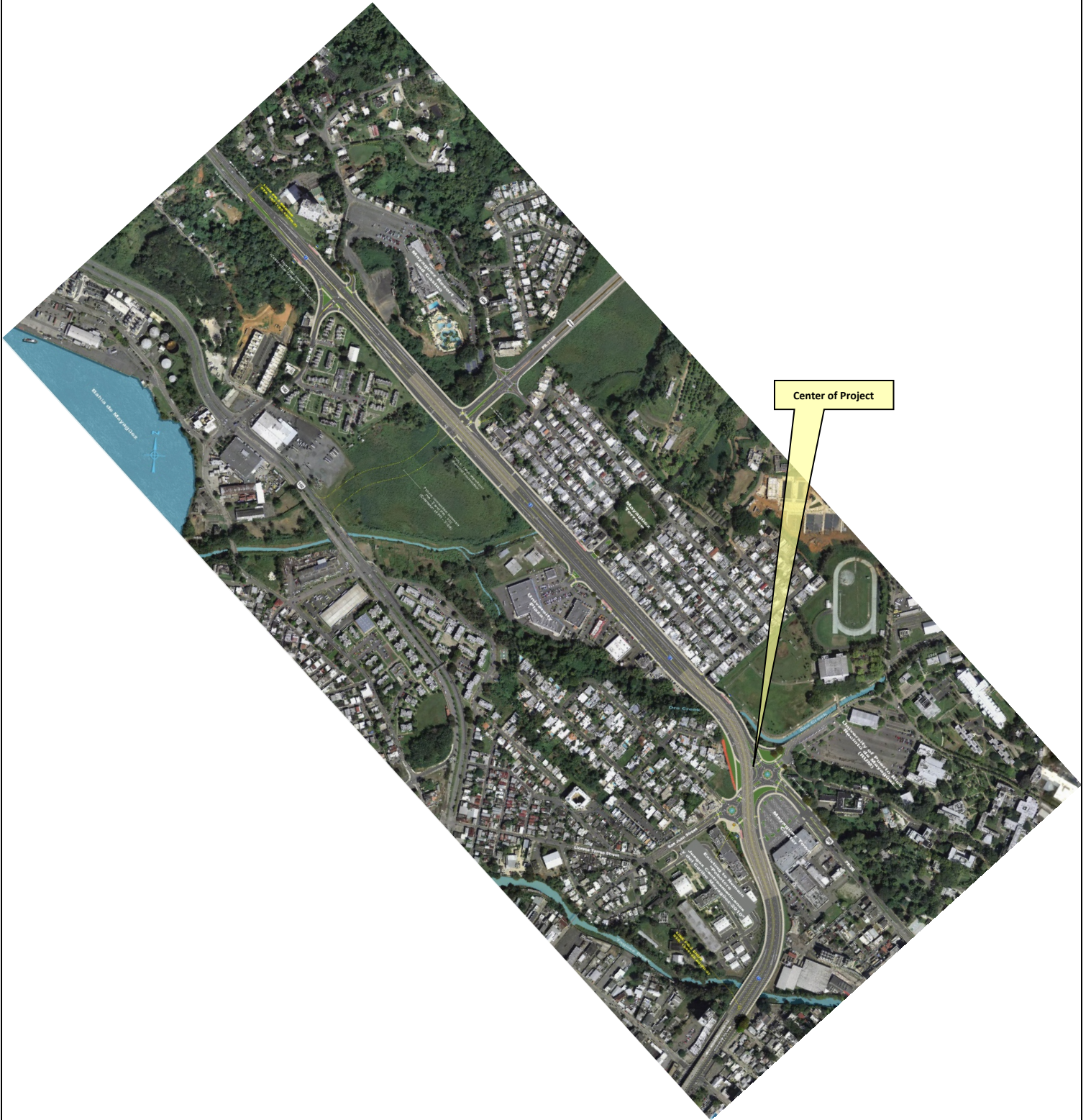
### Zoning Maps

**Reference:** Puerto Rico Planning Board, Municipality of Mayaguez, Sheets #23, 28, 29 & 34,3-2007 & 2-2011, accessed 7-2017.

**FIGURE 2**



RAF Environmental Consultants



**Project Layout  
Preferred Alternative 6**


**Reference:** ACT & PRHTA, Schematic Plan  
Delivery #3, GR/06, Rev. 3-12-2018

**FIGURE 3**



**RAF Environmental Consultants**



<b>Aerial Photo 1958</b>	<b>FIGURE 4</b>	 <b>RAF Environmental Consultants</b>
<b>Reference:</b> EDR Aerial Photo Decade Package, 4990601.5, 7-14-2017.		



INQUIRY #: 4990601.5  
YEAR: 1977



### Aerial Photo 1977

**Reference:** EDR Aerial Photo Decade Package, 4990601.5, 7-14-2017.

### FIGURE 5



RAF Environmental Consultants



3  
= 500'  
↑ N  
EDR



Center of Project

### Aerial Photo 1983

**Reference:** EDR Aerial Photo Decade Package, 4990601.5, 7-14-2017.

### FIGURE 6



RAF Environmental Consultants





# ACT Improvements to PR-2

La Vita & San Juan St.  
10-28-1993



Google earth

Image U.S. Geological Survey

**Aerial Photo 1993**

Reference: Google Earth, July 2017.

**FIGURE 7**



RAF Environmental Consultants

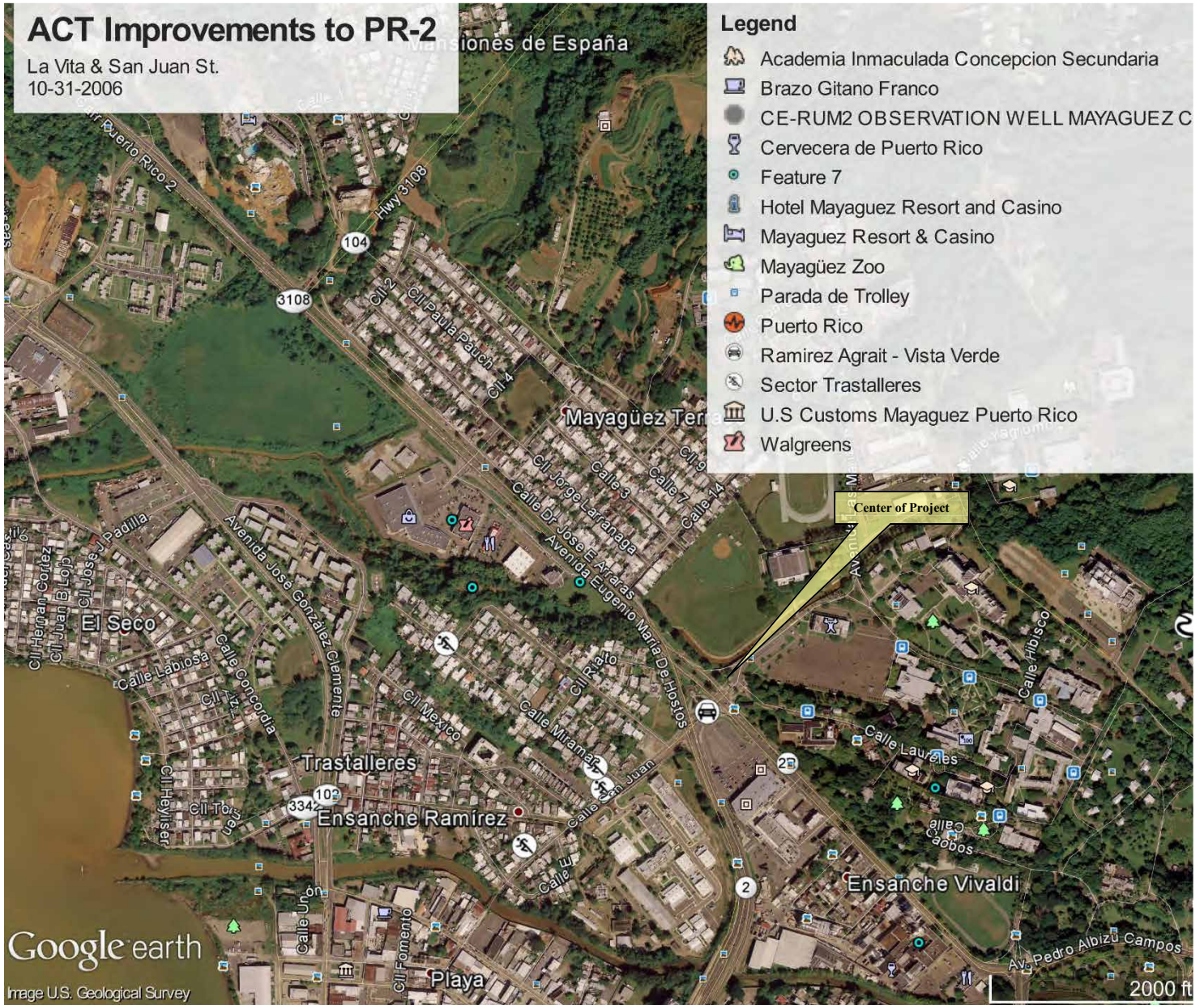


# ACT Improvements to PR-2


La Vita & San Juan St.  
10-31-2006

## Legend

- Academia Inmaculada Concepcion Secundaria
- Brazo Gitano Franco
- CE-RUM2 OBSERVATION WELL MAYAGUEZ C
- Cervecera de Puerto Rico
- Feature 7
- Hotel Mayaguez Resort and Casino
- Mayaguez Resort & Casino
- Mayagüez Zoo
- Parada de Trolley
- Puerto Rico
- Ramirez Agrait - Vista Verde
- Sector Trastalleres
- U.S Customs Mayaguez Puerto Rico
- Walgreens



Google earth  
Image U.S. Geological Survey

<b>Aerial Photo 2006</b>	<b>FIGURE 8</b>	 <b>RAF Environmental Consultants</b>
Reference: Google Earth, July 2017.		



**Aerial Photo 2010**

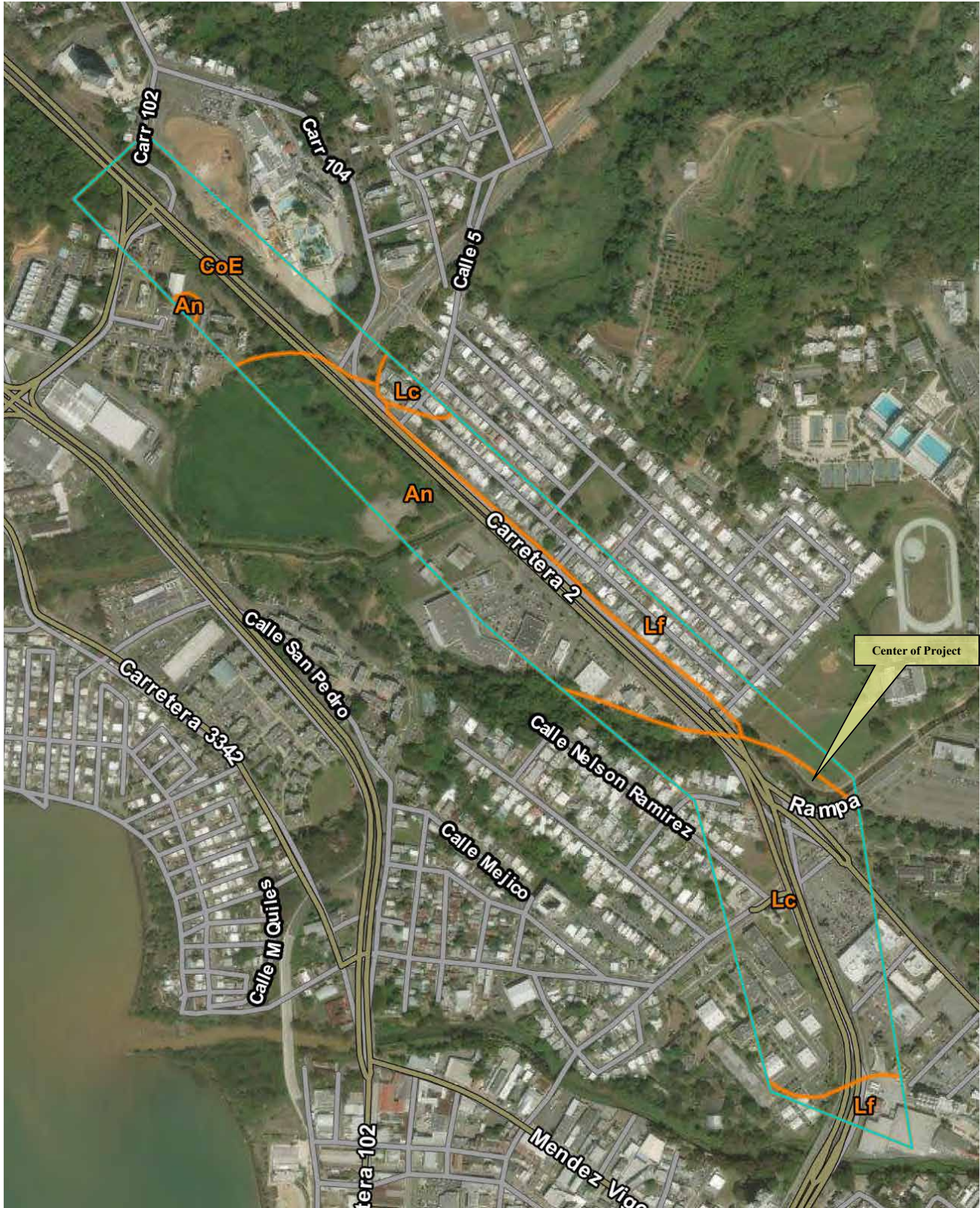
**Reference:** PRPB, *Junta de Planificación*, accessed, July 2017.

**FIGURE 9**



**RAF Environmental Consultants**





### Soil Map

**Reference:** Soil Survey of Mayaguez Area of Western PR, Dec. 1975, Aerial Images 12-31-09 & 4-2-16, Sheet #40, WSS, Version 12, Sept. 29, 2016, accessed 7-2017.

**FIGURE 11**



RAF Environmental Consultants



### Geology Map

**Reference:** USGS, Geologic Map of the Mayagüez & Rosario Quadrangles Puerto Rico, I-1657, A. F. Curet, 1986.

**FIGURE 12**

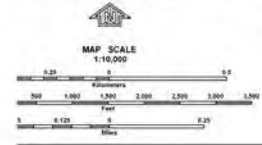


RAF Environmental Consultants



Map makers factory prior to Commonwealth of Puerto Rico and mapping, refer to the Community Flood Hazard Index in the Flood Hazard Report for the jurisdiction.

If flood insurance is available in the community, contact your insurance agent for flood insurance information.



**NFIP** PANEL 0985J

**FIRM**  
FLOOD INSURANCE RATE MAP  
COMMONWEALTH OF  
PUERTO RICO  
AND MUNICIPALITIES

PANEL 985 OF 2160  
(SEE MAP INDEX FOR FIRM PANEL LAYOUT)

CONTAINS:  
COMMUNITY: PUEBLO RICO    MAP NUMBER: 72000C0985J    DATE: 11/18/2009

NOTE TO USER: The Map Number shown below should be used when obtaining map information. The Community Number shown above should be used in insurance applications for the mapped community.

**FEDERAL EMERGENCY MANAGEMENT AGENCY**  
MAP NUMBER 72000C0985J  
MAP REVISED NOVEMBER 18, 2009

This is an official copy of a portion of the above referenced flood map. It was extracted using F-MIT On-Line. This map does not reflect changes or amendments which may have been made subsequent to the date on the title block. For the latest product information about National Flood Insurance Program flood maps check the FEMA Flood Map Store at [www.msc.fema.gov](http://www.msc.fema.gov)

**FEMA FIRM MAP**

**Reference:** FEMA FIRM Panel #C0985J, 11/18/2009, & NFHL, Google Earth, accessed July 2017.

**FIGURE 13**



**RAF Environmental Consultants**