

Appendix 5
Site Photographs

PHOTOGRAPH # 1

Looking south-east on PR-2, just before the intersection with PR-104 & PR-3108.



PHOTOGRAPH # 2

Looking south-east on PR-2 Km. 153.2. University Plaza is on the right. Stores include National, Pitusa, and Baskin & Robbins & Walgreens. Note: transformer on electric pole in front of the vacant hardware store.



PHOTOGRAPH # 3

Looking south from PR-2 Km. toward the Baskin-Robbins & *Pitusa* inside University Plaza & the former *Ferreteria* JJ Martinez Ginorio at Km. 152.9. Note: Same transformer on electric pole in front of the vacant hardware store as seen in Photo #2.



PHOTOGRAPH # 4a & b

Looking north-west from inside University Plaza at the former *Ferreteria* JJ Martinez Ginorio.



PHOTOGRAPH # 5a & b

Looking south-west the Baskin-Robbins & the vacant hardware store (5a). Note 3 transformers on electric pole along the fence line. 5b looking at a close-up of the emergency generators, various containers & garbage dumpsters along the fence line.



PHOTOGRAPH # 6a & b

Looking north-west from the Walgreens inside University Plaza at Km. 152.8. Note: Transformer on electric pole in on right side of Photo 6b.



PHOTOGRAPH # 7a & b

Looking south-east (7a.) & south (7b) from PR-2, Km. 153.4 toward the Advanced Auto Parts, Walgreens & McDonalds inside University Plaza. Note: Same transformer on electric pole, on the left side of Photo 7b, as seen in Photo #6b above.



PHOTOGRAPH # 8a & b

Looking south-west at the water tanks & emergency generators for Popeyes (right) & El Meson (left) Restaurants.



PHOTOGRAPH # 9a & b

Looking south-west (9a) at El Meso at Km. 153.2, and Popeye's from PR-2; & Looking north-west (9b) along the marginal road in front of Popeye's & Advanced Auto Parts.



PHOTOGRAPH # 10a & b

Looking north-west at the southbound PR-2 lane from the exit of University Plaza at around Km. 153.6.



PHOTOGRAPH # 11a & b

Looking south, south-east on PR-2 (11a) at 2010 Central American games decorated wall (proposed to be improved under this project), & looking south-west (11b) at PR-2 intersection & Central American Games "Tower" that is supposed to look like a torch.



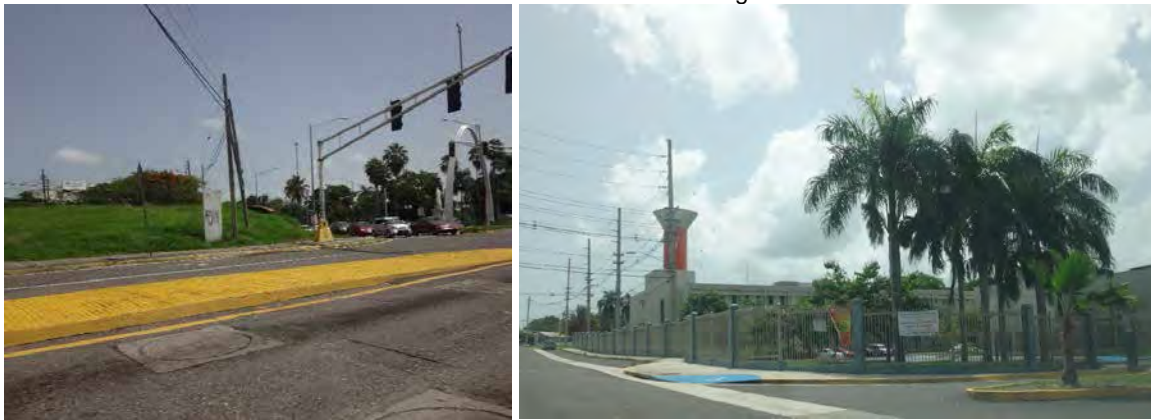
PHOTOGRAPH # 12a & b

Looking south-east (12a) from south lane of PR-2 at arch & statue. UPR-RUM is on the left; &
Looking North-east (12b) at PR-2 Intersection with arch in background.



PHOTOGRAPH # 13a & b

Looking north-east (13a) toward PR-2 intersection; & at Dr. Pedro Perera Fajardo Vocational School (13b)
on San Juan St. Note: Tower in background.



PHOTOGRAPH # 14a & b

Looking north (14a) at PR-2 intersection & north-east at the entrance to UPR-RUM.



PHOTOGRAPH # 15a & b

Looking north-west from PR-2R to PR-2 before (15a) & after (15b) the UPR-RUM entrance.



PHOTOGRAPH # 16a & b

Looking north-east (16a) at the concrete canal which is where the *Quebrada del Oro* is located, inside UPR; & Looking south-west (16b) toward the exit of UPR to PR-2. The *Quebrada del Oro* is located all along the right side of this photograph.



PHOTOGRAPH # 17a & b

Looking west, south-west (17a) at the exit of UPR-RUM to PR-2; & west (17b) at the ramp that exists to the north-bound lanes of PR-2 from UPR-RUM. The *Quebrada del Oro* is located on the right side of this photograph.



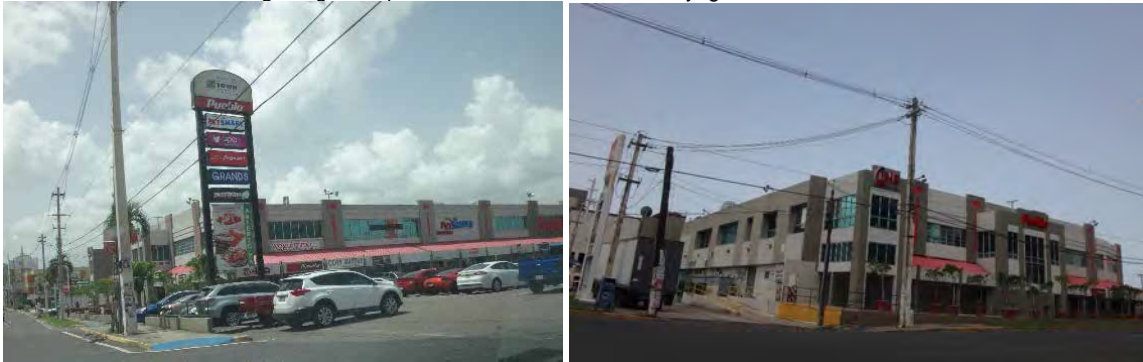
PHOTOGRAPH # 18 a & b

Looking north-east (18a) from PR-2 (Km. 154) at Mayaguez Town Center (also known as Mayaguez Shopping Center SE); & looking south-east (18b), down PR-2R (also known #252 Post North) at the Mayaguez Town Center on the right. Stores include Pueblo, Pet Smart, Open, Pizza Hut, Grands, Taco Maker, Copy Ave., *Yougurizimo* & a movie complex.



PHOTOGRAPH # 19a & b

Looking south (19a), PR-2R at the Mayaguez Town Center; & looking south-west (19b) at the offices, loading docks, garbage dumpsters & transformers of the Mayaguez Town Center.



PHOTOGRAPH # 20a & b

Immediately south of the Mayaguez Town Center is the Puma Service Station (SS) & 24 Hour "To Go" Store. Looking north-west (20a) along PR-2R (#160 Post North) at the former Gulf #023 SS; & Looking west (20b) at a portion of the *Radames Peña Inc.* (#158 Post Norte), office equipment & supplies building on the left, with the four (4) UST vents for the Puma SS in the center of the photo.



PHOTOGRAPH # 21a & b

Immediately south of the *Radames Peña Inc.* office equipment & supplies building is the *Compañía Cervecería de Puerto Rico* (was previously known as *Cervecería India Brewery*). Looking east from across PR-2 (21a), you can see the vertical tanks with a yellow stripe; & Looking north (21b) along PR-2 you can see the brewery on the right.



PHOTOGRAPH # 22a & b

Looking north-west at exit to PR-2 Marginal Road also known as Jose E. Arraras Street (22a) at Km. 152.7; & Looking north-west at a commercial store called Printing Machines located at #1134 Arraras St.



PHOTOGRAPH # 23a & b

Looking north-west (23a) at commercial stores including *Laboratorio Clínico de Hostos* at #1088 Arraras St.; & Looking east (23b), across PR-2 at the intersection in the center of Mayaguez Terrace. Nexan Tires (the former All-Star SS) at #1068 Arraras St., is located in the center of the photo.



PHOTOGRAPH # 24a & b

Looking north at the Nexan Tire shop (24a); & looking north-east (24b) at the Nexan Tire Shop lifts.



PHOTOGRAPH # 25a & b

Looking south (25a) at a dumpster in the center of Mayaguez Terrace. The Nexan Tire shop is located in the background; & looking north-east at old TV & 55 gallon drum used for garbage. This drum was previously used to store passion fruit juice, produced by the Agro Industrial.



PHOTOGRAPH # 26a & b

Looking south-west from the marginal road at garbage, debris & waste alongside the "green" strip. Note: McDonalds & Walgreens can be seen on the other side of PR-2.



PHOTOGRAPH # 27a & b

Looking south-west from the marginal road at a mattress, debris & waste alongside the “green” strip.



PHOTOGRAPH # 28a & b

Looking south-west from the marginal road at construction debris & waste alongside the median strip.



PHOTOGRAPH # 29a & b

Looking north-west on the north-bound lanes of PR-2 at the intersection with PR-104 & PR-3108 at the start of the Mayaguez Resort & Casino property alongside PR-2, Km. 152.9.



PHOTOGRAPH # 30a & b

Looking west at stains & debris left over from a car accident at the intersection of PR-2, PR-104 & PR-3108.



PHOTOGRAPH # 31a & b

Looking south-west (31a) from PR-102 at Oil Energy Systems, across the intersection with PR-3341; & looking north-east (31b) inside Oil Energy Systems facilities.



PHOTOGRAPH # 32

Looking north (32a) from the “malecón” at PREPA’s Centro Hydro-Gas, power plant; & looking north-east (32b) at the boundary between PREPA & Oil Energy Systems facilities.



PHOTOGRAPH # 33

Looking north, north-east at the *Mar Y Sol* Public Housing Project on PR-102, immediately south of PR-2, Km. 151.5.



PHOTOGRAPH # 34

Looking north-west on the north-bound lanes of PR-2, 152.3, just after the PR-2 Intersection & immediately prior to the "Victoria Super Station"-Mayaguez Gulf.



PHOTOGRAPH # 35

Looking south-east across the UST's located at the "Victoria Super Station"-Mayaguez Gulf found at PR-2, Km. 152.



PHOTOGRAPH # 36

Looking south-west towards PR-2 at the four (4) UST vents for the "Victoria Super Station"-Mayaguez Gulf.

